

MONORAIL SC-134

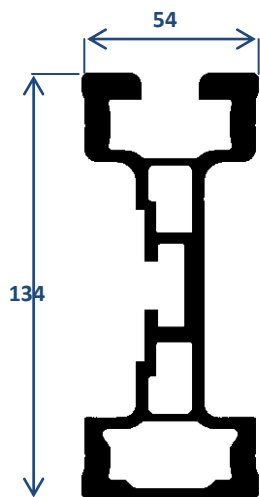
The *SKY CLIMBER*[®] SC-134 aluminum monorail profile is designed for easy mounting on every type of building or structure where a horizontal monorail solution is required. Because of the specially designed shape of the monorail extrusion, *SKY CLIMBER*[®] is able to produce monorail sections that are light weight but very strong.

A wide range of bracket types insures a smooth monorail path at all times. Even unique architecture is no problem for the *SKY CLIMBER*[®] SC-134 monorail system.

In combination with single or double suspension trolleys and our *SKY PI/BMU* cradles, the *SKY CLIMBER*[®] monorail system will provide you a safe, permanent and cost effective solution for all your access or maintenance problems.



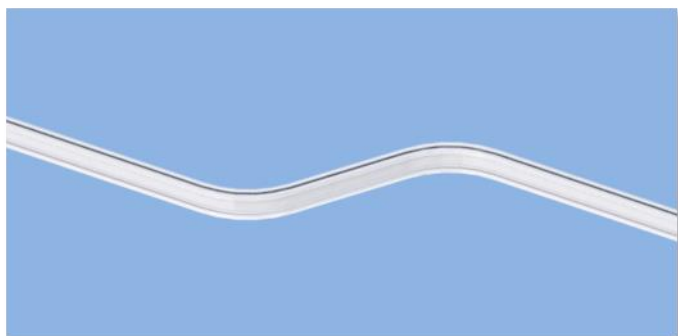
MONORAIL PROFILE SC-134



- Ref. nr. : 21000300
- Material: Anodized aluminum
- Weight: 5,981 kg/m
- Height: 134 mm
- Width: 54 mm



The *SKY CLIMBER*® SC-134 aluminum monorail can be bended in various shapes and corners.



S-shaped bend



90° corner sections



Customized bends



S-shaped and 90° corner sections

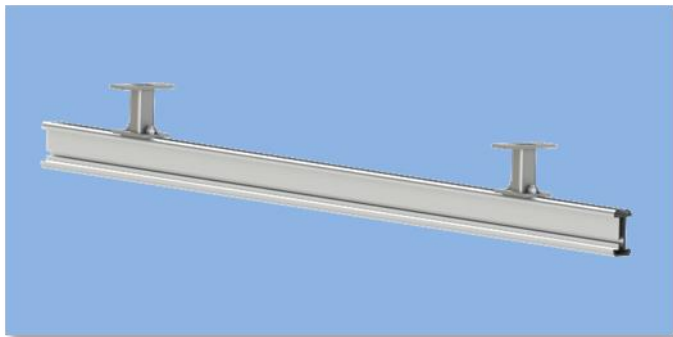
MOUNTING OPTIONS

The *SKY CLIMBER*[®] SC-134 aluminum monorail profile is installed 550 mm away from the façade. *SKY CLIMBER*[®] has standardized concepts of brackets that can be easily adjusted to most buildings and situations. *SKY CLIMBER*[®] is also capable of offering tailor made solutions. Special brackets fitting the existing architecture can be developed.

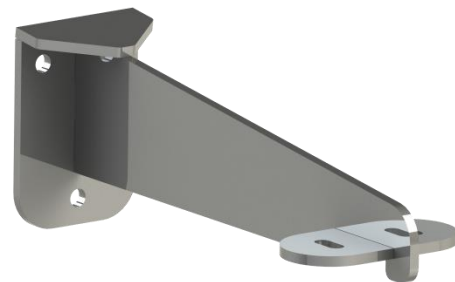
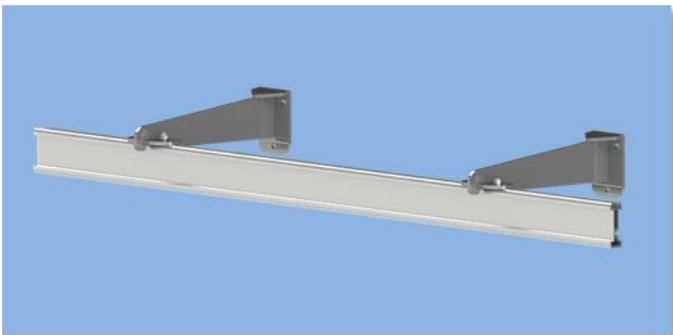
The maximum distance between brackets is 2.5 m when used in combination with 500 kg hoists. When using 300 kg hoists the maximum bracket distance is 3 m. Smaller distances between brackets are possible upon request.

All our brackets are manufactured out of hot dipped galvanized steel insuring they are weatherproof and strong. They are tested for strength and durability in our factory.

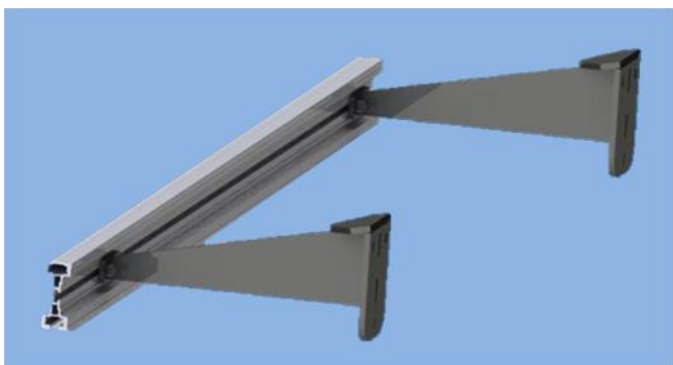
Top Mounted Brackets



Top Side Mounted Brackets



Side Mounted brackets

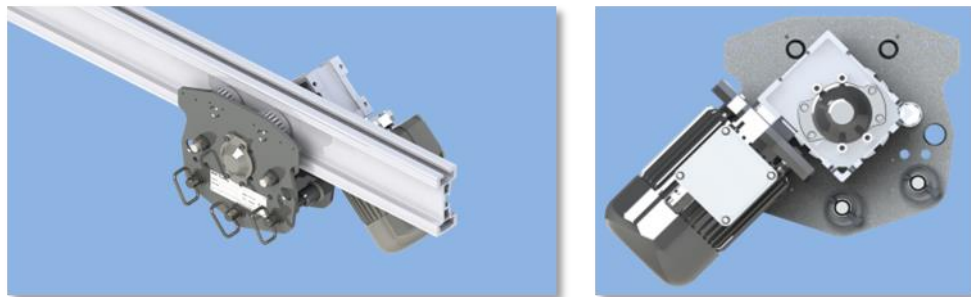


TROLLEYS

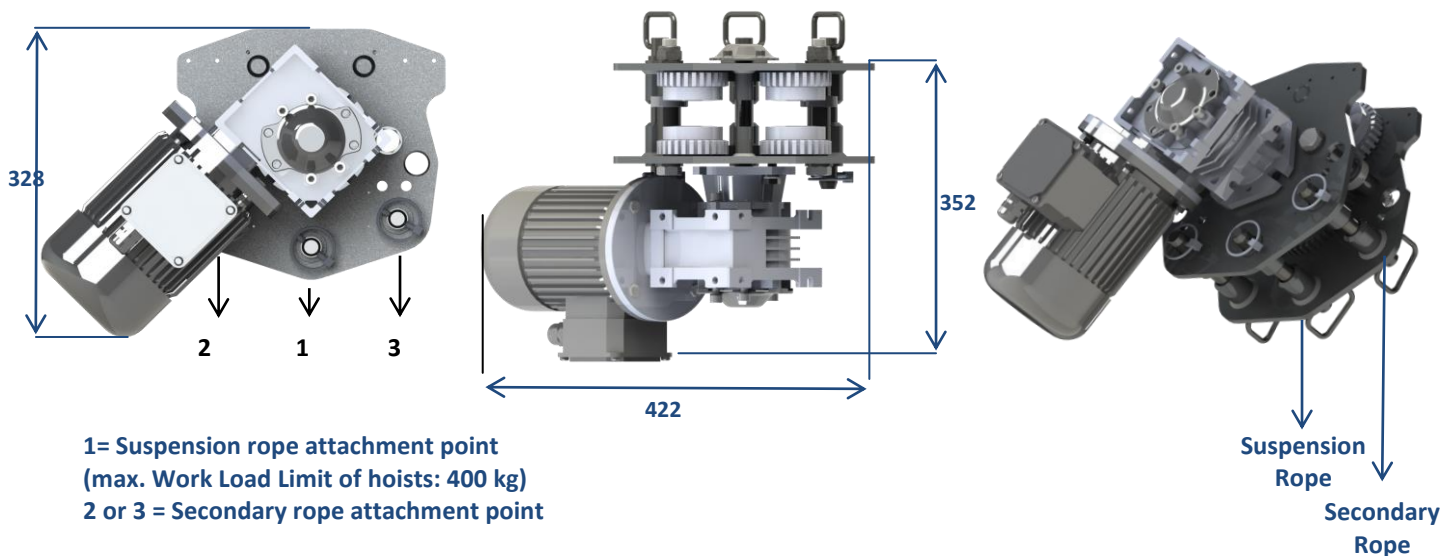
SC-EU134:

The SC-EU134 is an electrical trolley designed for the *SKY CLIMBER*® SC-134 monorail system. This trolley hangs underneath the monorail and can be used with top mounted and top side mounted brackets. Its motor and gearbox ensure a maximum traversing speed of 9 m/min.

The SC-EU134 trolley has a unique traction system. All 4 wheels are driven to assure traction in all conditions. The trolley is also self-locking, which prevents unwanted movement along the track, even in case of power failure.



Technical information:



<ul style="list-style-type: none"> • Working load limit (WLL) • Self-weight • IP Protection Class • Horizontal speed trolley • Power • Length x Width x Height (mm) • Electrical motor • Safety against rolling out of track • Safety against falling of track • Maintenance • Spare parts 	<p>500 kg 23,5 kg IP 55 9 m/min (18 m/min upon request) 400 V (3ph) 422x352x328 mm 0,37 kW - rpm 1370 (50 Hz/60 Hz) End stops on track and self-locking system Fall protection studs Annual maintenance Only use <i>SKY CLIMBER</i>® original parts</p>
---	---

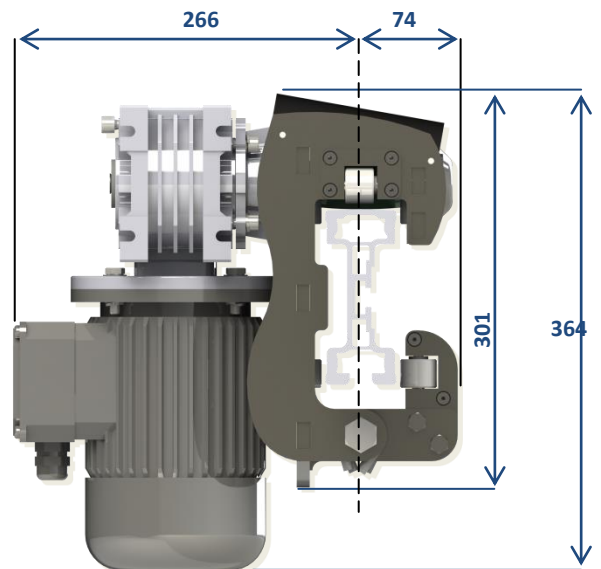
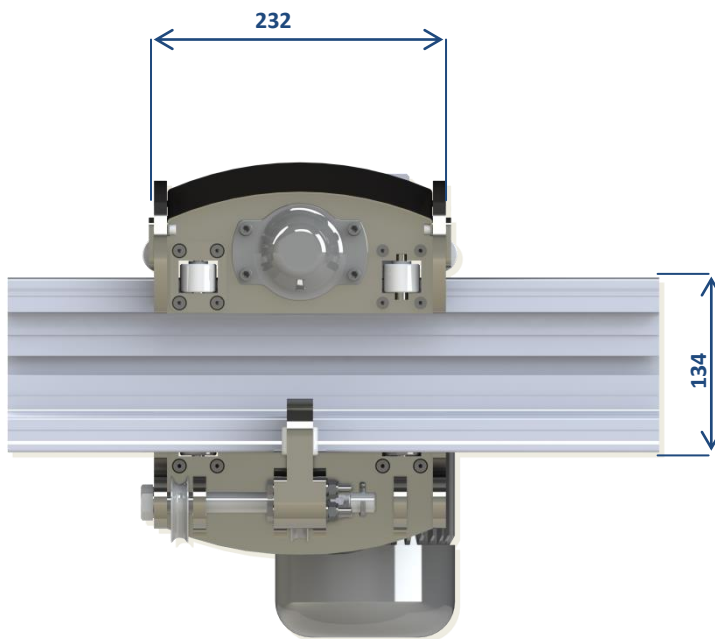
TROLLEYS

SC-EC134

The SC-EC134 is an electrical trolley designed for the SKY CLIMBER® SC-134 monorail system. The C-trolley hangs over the monorail. Therefore it can only be used with side mounted brackets. Its motor and gearbox ensure a maximum traversing speed of 9 m/min.



Technical information:



• Working load limit (WLL)	500 kg
• Self-weight	24 kg
• IP Protection class	IP 55
• Horizontal speed trolley	9 m/min (18 m/min upon request)
• Power	400 V (3ph)
• Length x Width x Height (mm)	232x266x364 mm
• Electrical motor	0,37 kW - rpm 1370 (50 Hz/60 Hz)
• Safety against rolling out off track	End stops on track
• Safety against falling off track	Fall protection studs
• Maintenance	Annual maintenance
• Spare parts	Only use SKY CLIMBER® original parts

TROLLEYS

SC-MU134

The SC-MU134 is a manual trolley designed for the *SKY CLIMBER*® SC-134 monorail system. Its design is based on the SC-EU134 trolley, but it has no motor or gearbox. A manual locking system is included. Traversing is up to manual forces applied by the user.

The SC-EU134 trolley can be used with top mounted and top side mounted brackets.



Technical information:

<ul style="list-style-type: none"> • Working load limit (WLL) • Safety against rolling out of track • Safety against falling of track • Maintenance • Spare parts 	500 kg End stops on track Fall protection studs Annual maintenance Only use <i>SKY CLIMBER</i> ® original parts
--	---

The SC-MU134 trolley can also be used in combination with the SC-EU134 trolley and the SC-RU134 trolley. In this case the SC-MU134 functions as a slave trolley and the SC-EU134/SC-RU134 as master trolley.

SC-MC134

The SC-MU134-1 is a manual trolley designed for the *SKY CLIMBER*® SC-134 monorail system. Its design is based on the SC-EC trolley but has no motor or gearbox. A manual locking system is included. Traversing is up to manual forces applied by the user.



The SC-MC134 trolley can be used with side mounted brackets.

Technical information:

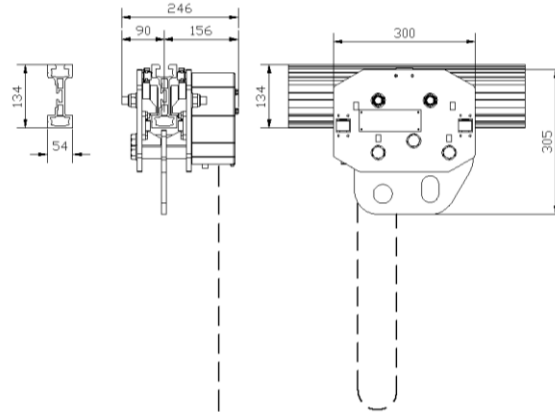
<ul style="list-style-type: none"> • Working load limit (WLL) • Safety against rolling out of track • Safety against falling of track • Maintenance • Spare parts 	500 kg End stops on track Fall protection studs Annual maintenance Only use <i>SKY CLIMBER</i> ® original parts
--	---

The SC-MC134 trolley can also be used in combination with the SC-EC134 trolley and the SC-RC134 trolley. In this case the SC-MC134 functions as a slave trolley and the SC-EC134/SC-RC134 as master trolley.

TROLLEYS

SC-RU134

The SC-RU134 is a rope driven trolley designed for the *SKY CLIMBER*® SC-134 monorail system. This trolley hangs underneath the monorail and can be used with top mounted and top side mounted brackets. This system has no motor or gearbox. A manual locking system is included. The SC-RU134 is rope driven.

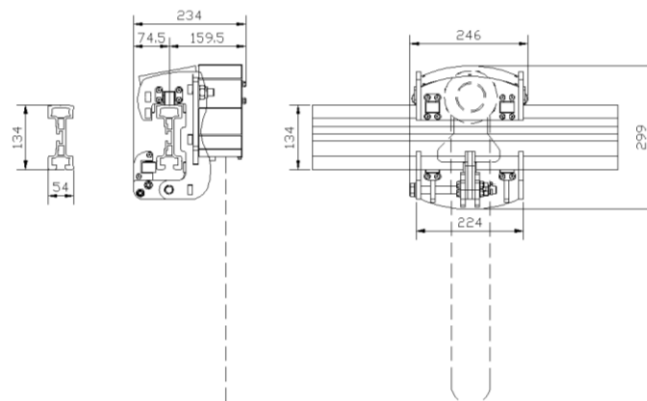


Technical information:

<ul style="list-style-type: none"> • Working load Limit (WLL) • Self-Weight • Safety against rolling out of track • Safety against falling of track • Maintenance • Spare parts 	500 kg 19 kg End stops on track Fall protection studs Annual maintenance Only use <i>SKY CLIMBER</i> ® original parts
---	--

SC-RC134-1

The SC-RC134-1 is a rope driven trolley designed for the *SKY CLIMBER*® SC-134 monorail system. The C-trolley hangs over the monorail. Therefore it can only be used with side mounted brackets. This system has no motor or gearbox. A manual locking system is included. The SC-RC134 is rope driven.



Technical information:

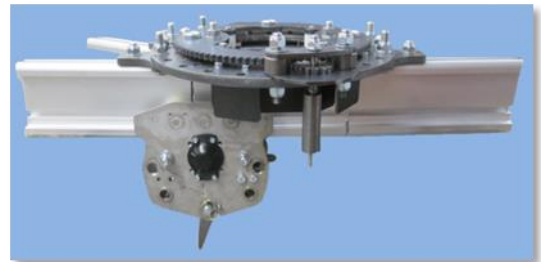
<ul style="list-style-type: none"> • Working load Limit (WLL) • Safety against rolling out of track • Safety against falling of track • Maintenance • Spare parts 	500 kg End stops on track Fall protection studs Annual maintenance Only use <i>SKY CLIMBER</i> ® original parts
--	---

ADDITIONAL OPTIONS

Turntable

SKY CLIMBER[®] has developed a manual turntable allowing to switch the monorail trolley to different monorail tracks. This turntable is easy to mount and to operate and with the possibility to change the angle every 15 degrees from 30° up to 150° (Only applicable with underhanging trolleys). It will provide you a flexible solution on complex buildings were a combination of monorail tracks is used. The turntable can be painted or powder coated in any desired color.

Position 30°



Spreader bar

When the monorail track has a lot of corners, a spreader bar is recommended. This spreader bar allows the trolleys to be closer together on the track. This helps for easy cornering and guarantees the platform will pass tighter corners than it normally would.



Connection rod

The connection rod is used to keep the distance between the trolleys fixed. This is vital when using a platform with sky grip safety devices (Mechanical anti tilting device).

