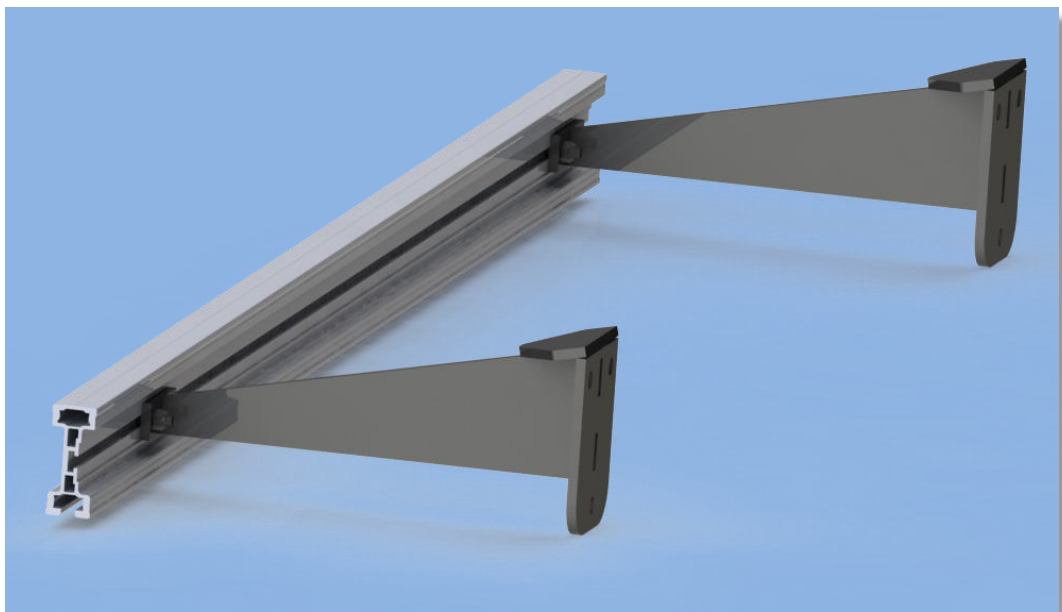




SKY CLIMBER News: March 2014

SC-EC134 Electrical Monorail C-Trolley

The SC-EC134 is an electrical trolley designed for the SKY CLIMBER® SC-134 monorail system. The C-trolley hangs over the monorail and is to be used with side mounted brackets. Its motor and gearbox ensure a maximum traversing speed of 9 m/min.

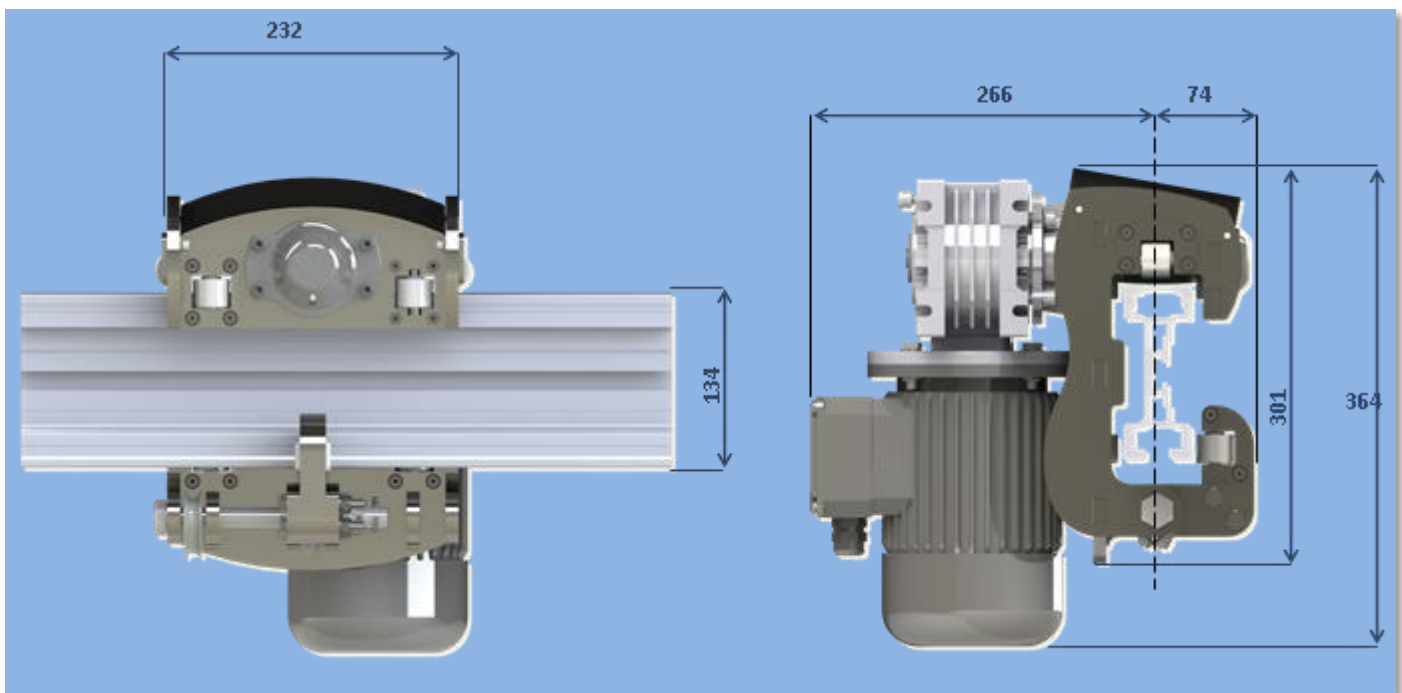




SKY CLIMBER News: March 2014

SC-EC134 Electrical Monorail C-Trolley

Technical Information:



• Working load limit (WLL)	500 kg
• Self-weight	24 kg
• IP Protection class	IP 55
• Horizontal speed trolley	9 m/min (18 m/min upon request)
• Power	400 V (3ph)
• Length x Width x Height (mm)	232x266x364 mm
• Electrical motor	0,37 kW - rpm 1370 (50 Hz/60 Hz)
• Safety against rolling out off track	End stops on track
• Safety against falling off track	Fall protection studs
• Maintenance	Annual maintenance
• Spare parts	Only use SKY CLIMBER original parts

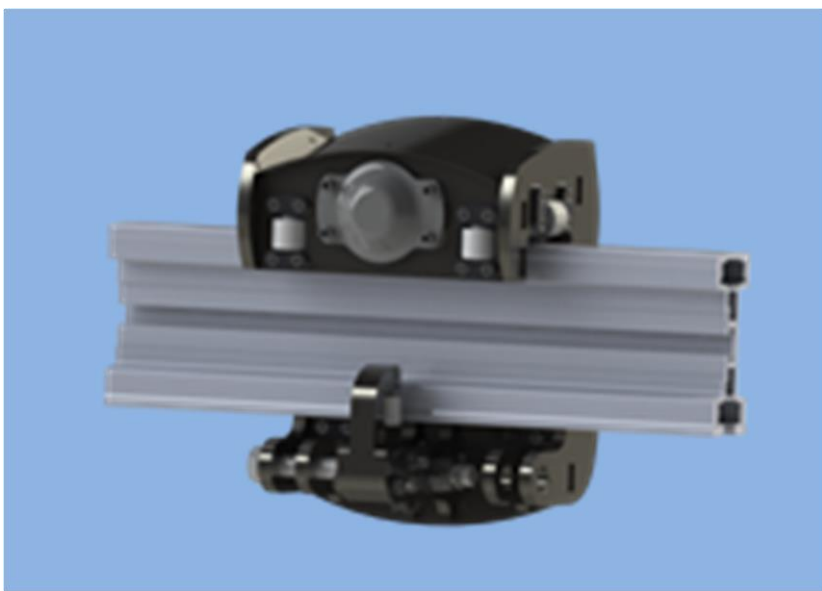


SKY CLIMBER News: March 2014

SC-MU134 Manual Monorail C-Trolley

The SC-MU134-1 is a manual trolley designed for the SKY CLIMBER® SC-134 monorail system. Its design is based on the SC-EC trolley but has no motor or gearbox. A manual locking system is included. Traversing is up to manual forces applied by the user.

The SC-MC134 trolley can be used with side mounted brackets.



Technical Information:

<ul style="list-style-type: none">• Working load limit (WLL)• Safety against rolling out of track• Safety against falling of track• Maintenance• Spare parts	<p>500 kg End stops on track Fall protection studs Annual maintenance Only use SKY CLIMBER® original parts</p>
--	--

The SC-MC134 trolley can also be used in combination with the SC-EC134 trolley and the SC-RC134 trolley. In this case the SC-MC134 functions as a slave trolley and the SC-EC134/SC-RC134 as master trolley.