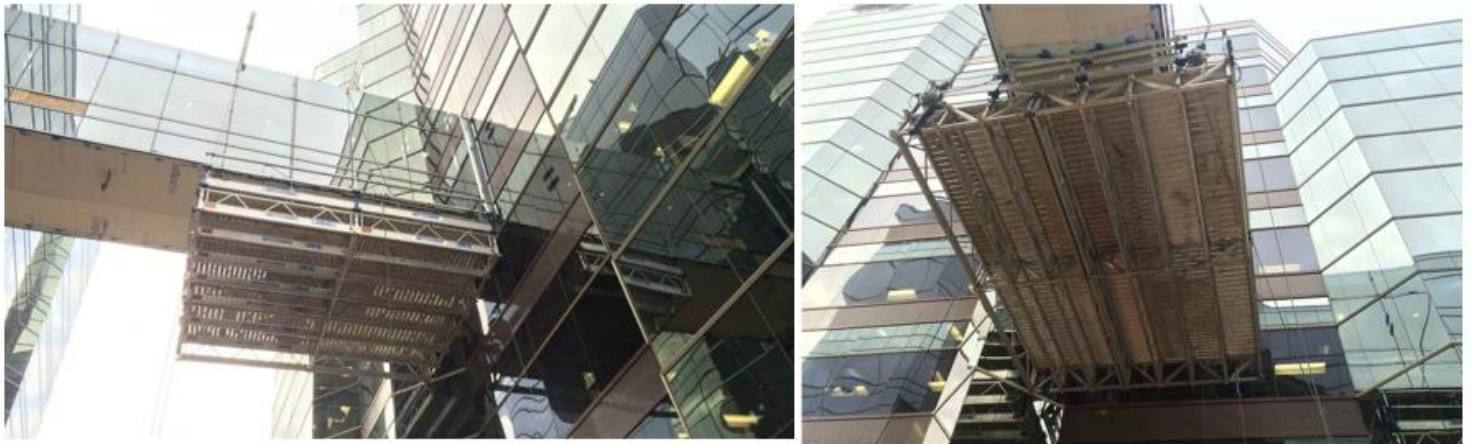


Another Sky Climber Reference!

Dance Floor Platform - Canada



DIVISION: Sky Climber USA
PROJECT NAME: Office Building Regina, Canada
APPLICATION: Dance Floor Platform

Sky Climber was selected by the façade contractor to develop a suspended system to perform glazing and metal cladding work on the underside of a pedestrian bridge linking two office buildings in downtown Regina, Canada.

The dance-floor platform was created using mostly standard Sky Stage Ultra components with four CX500 hoists. The exterior sides of the platform were made extra high by fixing additional side frames and guardrails to provide better protection for the installers.

The suspension system consisted of four rolling roof beams and two custom-made rigid beams 5m long, which stretched across the roof of the bridge. The dance-floor was suspended under the walkways from these beams, creating a system that wrapped around the bridge.

As work progressed down the length of the bridge, the entire suspension system was simply rolled along the roof, enabling the platform underneath to move into the correct position for the glazing work to continue.

The sturdiness and reliability of the suspension system meant that crews were able to precisely position the panels and carry out the works quickly and efficiently.

Vertical Run	25m
Type of cradle	6m x 6m Sky Stage Ultra
No. of persons	6
Rated Load	560kg
Type of hoist	Compact 500kg
Suspension system	Rolling roof beams
Norms	UL