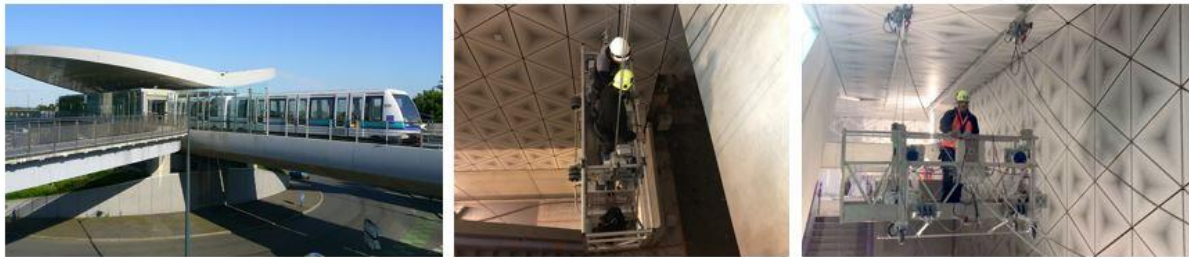




September, 2019

Another Sky Climber Reference!

Metro De Rennes - France



- DIVISION:** Sky Climber Europe
- PROJECT NAME:** Metro de Rennes – France
- APPLICATION:** Monorail and Sky PI cradles

The city of Rennes in France is building a new metro Line B that be put in service in 2020 serving thirteen new metro stations. Four of the new underground stations: Mabilais, Colombier, Gares and Saint-Germain, will each be fitted with its own Sky Climber access system.

Sky Climber was selected to design and supply a monorail and suspended cradle system for each of the stations. The first station of Mabilais has been completed. The access system allows the cleaning of the ceiling as well as the vertical surfaces of the station.

The surfaces are covered with special triangular cladding panels designed to create an artistic motif on the surfaces. Behind the cladding panels is a system of LED lighting that adds to the overall artistic effect.

The Sky Climber system is designed to allow the cleaning of the panels as well as the replacement of LED lighting elements.

The cradles were designed with especially low mounted stirrups to allow a maximum proximity to the ceiling and maximum access to the upper panels where a concentration of LED lights was located. The monorails are fixed to the ceiling with particular attention to the locating the brackets at the interaction between panels to minimize the aesthetic interference with the artwork. The end of each monorail is fitted with special automatically closing end-stops to allow the motorized trolleys to be easily and safely removed after use.

Vertical run	20m
Suspension System	SC134 Monorail with Motorized Trolleys
Type of cradle	Sky PI Cradle and Modular cradles
Self-Weight of cradle	300kg, 450kg
Rated Load of cradle	240kg
Hoisting	LNx hoist and CX500, 400V/three phase
Norms	European Norm EN1808